

## **Saxophone 2018**

**Prokofiev** – Romeo and Juliet (tenor): Figure 9 for 5 measures; figure 17 for 4 measures; Lento, 8 after figure 20 for 2 measures

**Ravel** – Bolero (tenor)

**Bernstein** – West Side Story: Symphonic Dances (alto), mm. 146 – 168, & mm. 656 – 668

**Rachmaninoff** – Symphonic Dances (alto), mvt. 1 solo

# РОМЕО и ДЖУЛЬЕТТА

2<sup>a</sup> СЮИТА

# ROMÉO et JULIETTE

2<sup>me</sup> SUITE

(Figure 9 for 5 measures, figure 17 for 4 measures,  
& Lento, 8 after figure 20 for 2 measures)

Сергей ПРОКОФЬЕВ  
Serge PROKOFIEFF op. 64-ter

## I. Монтеки и Капулетти

Saxofono tenore in B

Andante

Allegro pesante



Moderato tranquillo



Allegro pesante

Sax. Solo.



Джyльетта девочка

II.

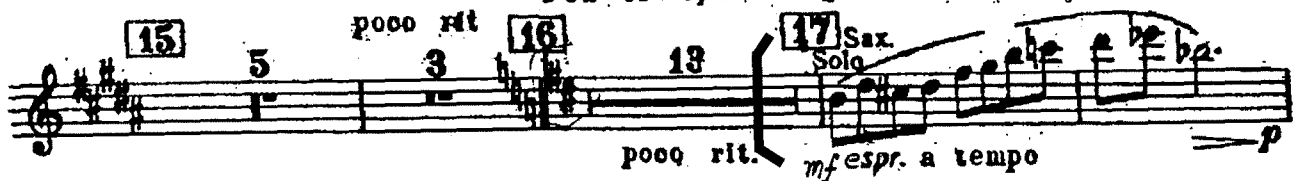
Juliette jeune fille

Vivace

poco rit. a tempo



Più tranquillo (quasi andantino?)

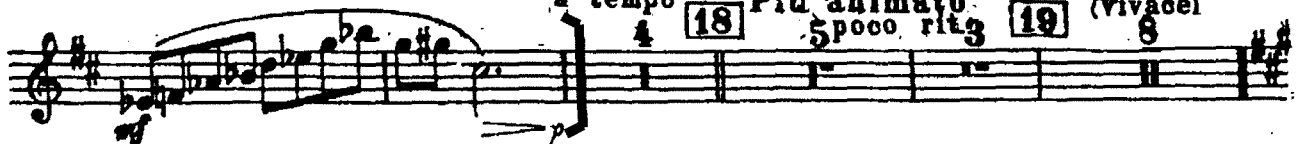


poco rit.

a tempo

Più animato  
poco rit.

Più animato  
(vivace)



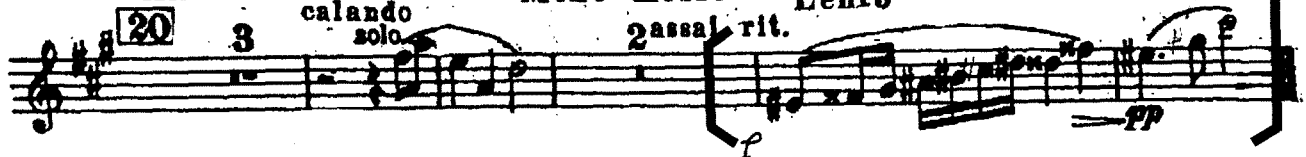
Andante dolente

Meno mosso

Lento

calando  
solo

passal. rit.



Патер Лоренцо

III.

Frère Laurence

tacet

# Bolero

(Figure 6 to figure 7)

Maurice Ravel

(1875-1937)

B $\flat$  Tenor Saxophone

Tempo di Bolero  
moderato assai

6

Solo

*mp espressivo, vibrato*

Copyright 1929, Durand et Cie  
Used by Permission of the Publisher, Eiken-Vogel, Inc.  
Sole Representative U.S.A.

To Sid Ramin, in friendship  
Symphonic Dances from "West Side Story"

ALTO SAXOPHONE IN E $\flat$  ✓

Leonard Bernstein

mm. 146 - 168

141 Scherzando e misterioso  
(l'istesso tempo)

Musical score for Alto Saxophone, measures 141-175. The score is in treble clef with a key signature of one sharp (F#). It begins with a 4-measure rest, followed by a *mp* dynamic. Measure 149 includes a *gliss.* instruction. The dynamics range from *fp* to *f*, *p*, and *cresc.*. There are several slurs and accents throughout. Measure 175 ends with a double bar line and a *fin.* marking.

mm. 656 - 668

Musical score for Alto Saxophone, measures 656-670. The score is in treble clef with a key signature of two sharps (F# and C#). It begins with a *cresc. sempre* instruction. Measure 656 starts with a *f* dynamic. The score features several slurs and accents. Measure 661 includes a *flutt.* instruction. The dynamics range from *f* to *ff*. There are several slurs and accents throughout. Measure 670 ends with a double bar line.

# SYMPHONIC DANCES

OPUS 45

SAXOPHONE ALTO

I

S. RACHMANINOFF

Mvt. 1, 4 before fig. 11 to 4 after fig. 13

*Lento*  
*Molto espressivo*

mf

(11)

2.

dim.

mf

(12)

p

f

(13)

p

dim.

mf

dim.

p